

---

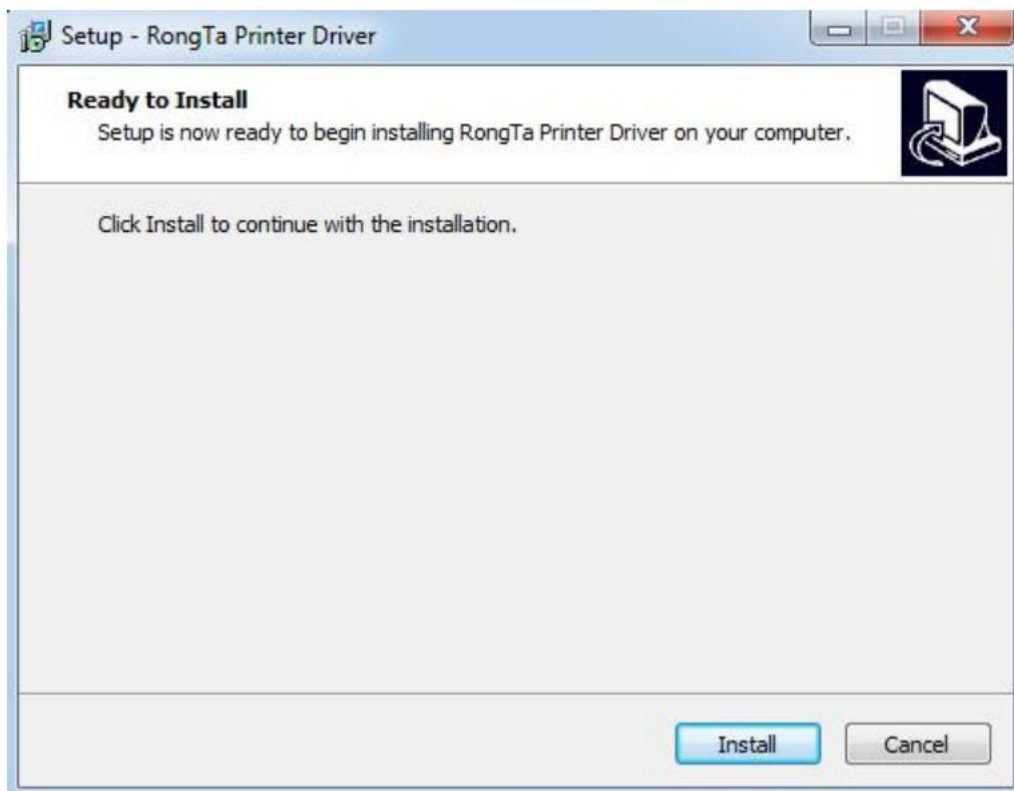
# **TP-58/TP-58PLUS Series THERMAL RECEIPT PRINTER Driver Installation Instructions**

# 1.Windows Driver Installation

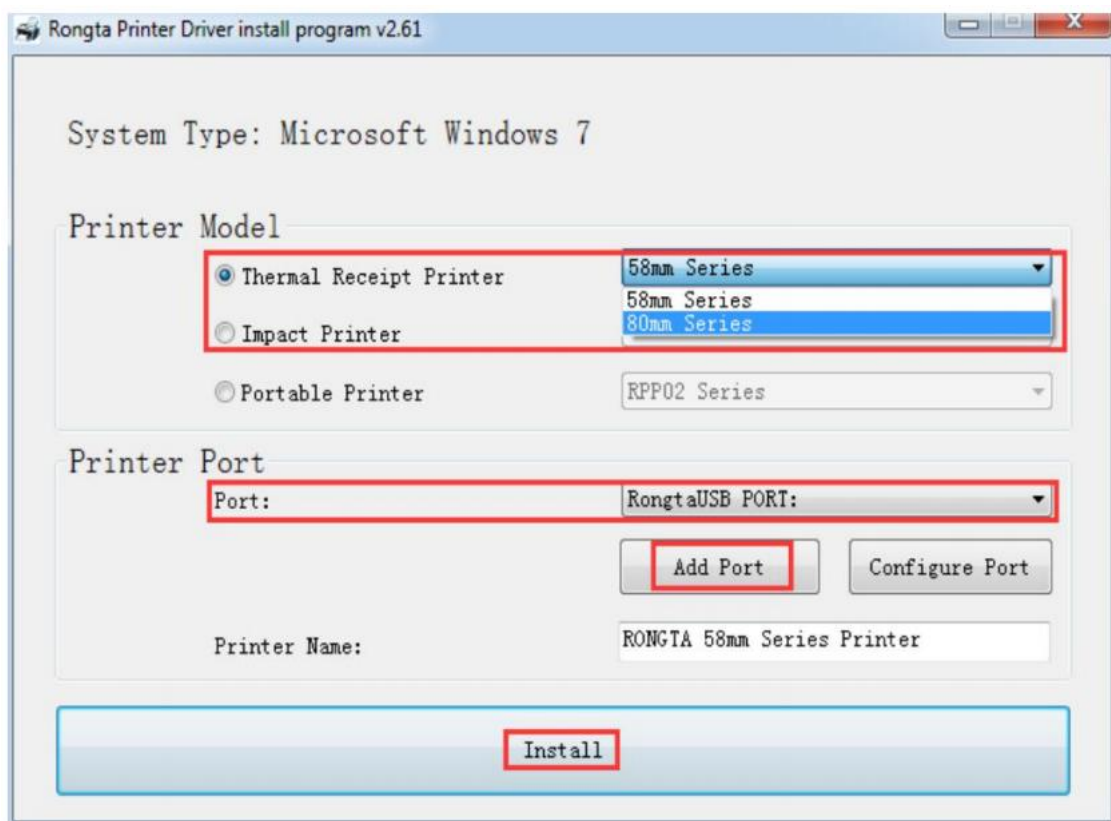
(1)Run “58 and 80 Series Driver Install V2.64” to install the printer driver. The dialog box shown in the figure below pops up,Select the installation language and click “OK”:



(2)The dialog box shown in the figure below pops up,click “Install”, as shown in the figure below:



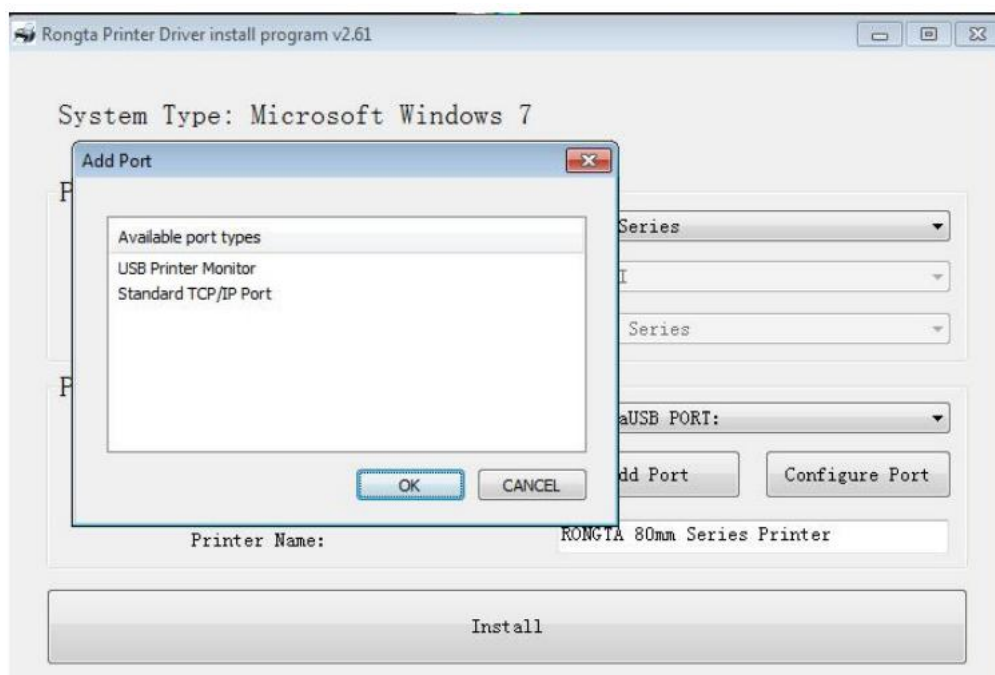
(3)Then the dialog box shown in the figure below pops up,Select the corresponding printer model and port, and then click “Install” as shown in the figure below:



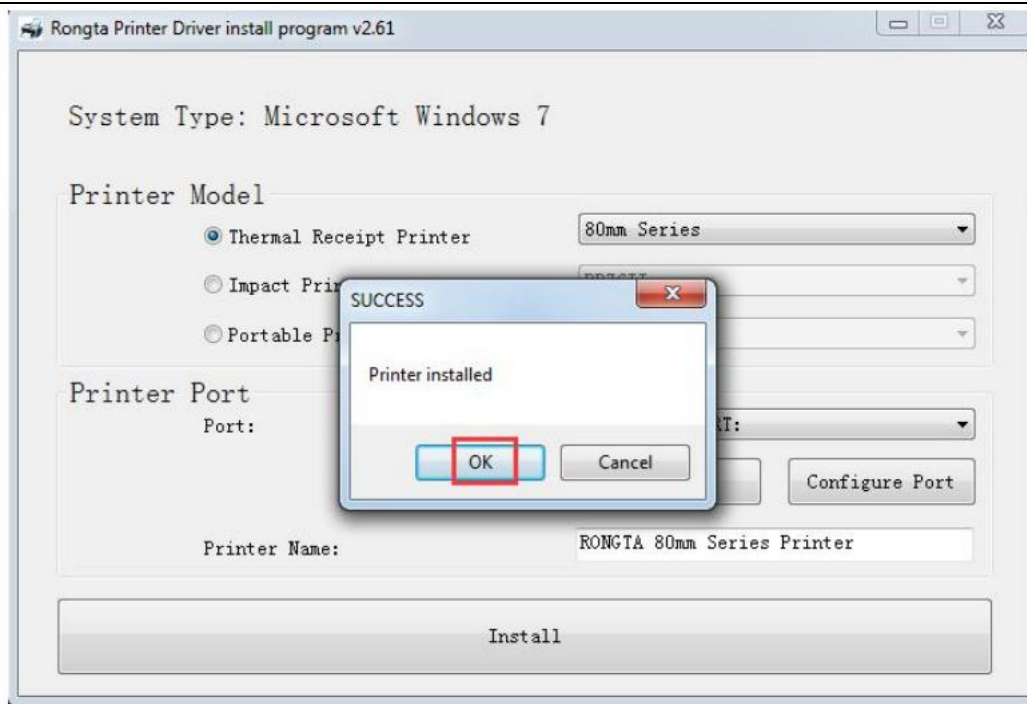
a. 58mm Series: Driver for 58mm Series

b. 80mm Series: Driver for general 58mm Series

c. When adding "Print Port", if the corresponding IP port needs to be selected but the port is not included in the options of the "Configuration Port" drop-down menu, you can select the "Add Port" function at this point. Configure the port you need through "Standard TCP/IP Port".



d. Then the dialog box shown in the figure below pops up. Click "OK" first, then click "Exit", as shown in the figure below.:



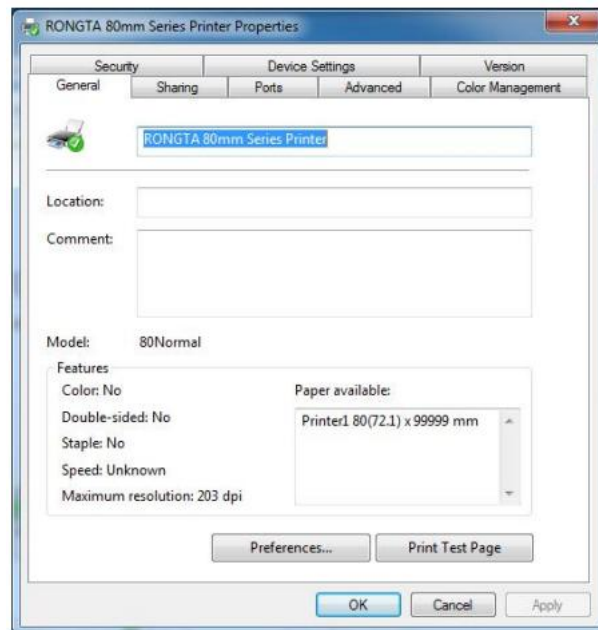
e. Finally, click “Finish (F)” as shown in the figure below, At this point, the printer driver is installed.



## 2.Set and Test the Printer

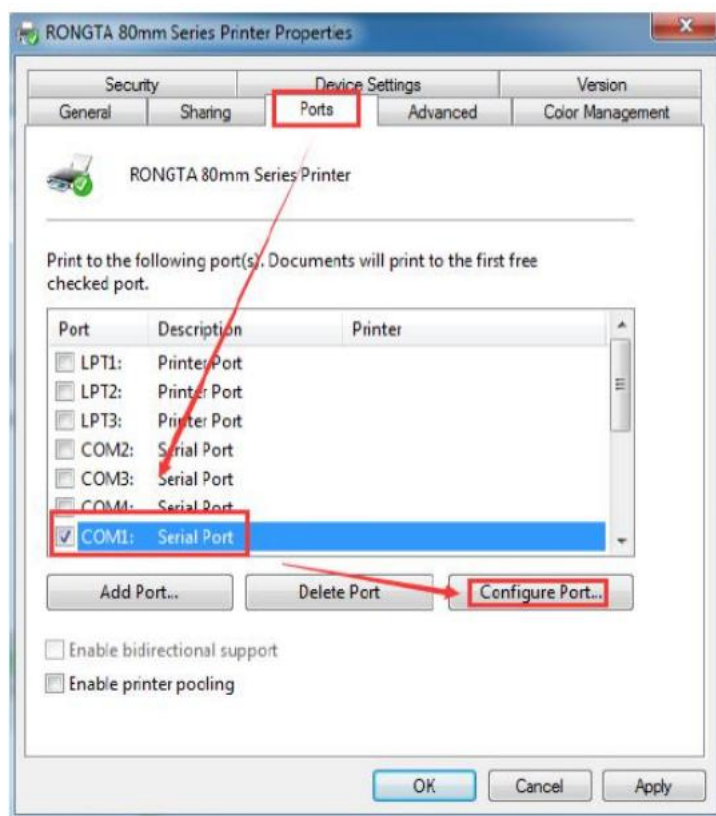
### 2.1 Set Printer Properties

After installing the printer driver, view “Start” -> “Control Panel” - “Printer and Fax” -> “Printer Properties” of RONG TA 80mm Series Printer. The “Printer Properties” window will pop up, as shown in the figure below:

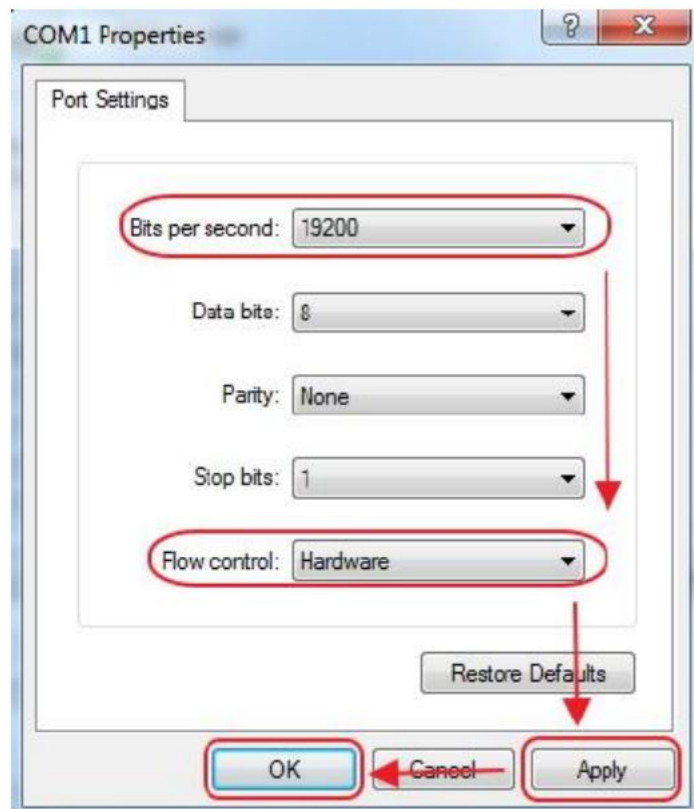


## 2.2 Print Test Page via Serial Port

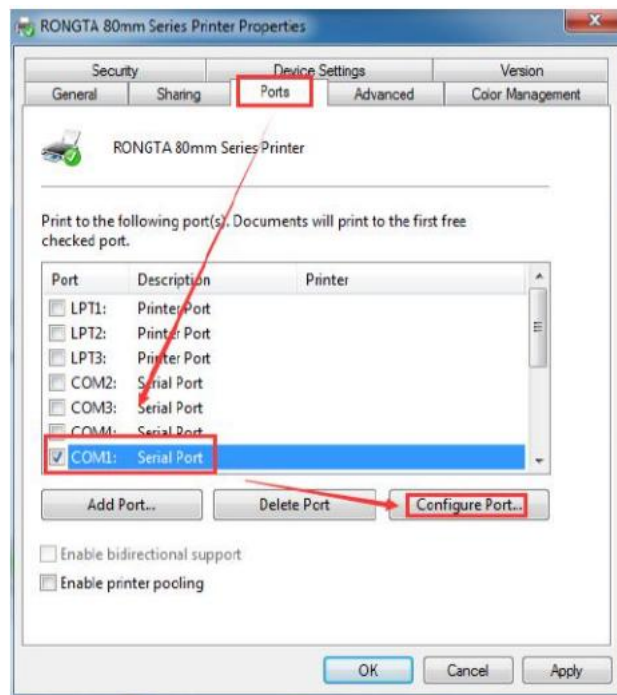
(1) Select "Port", Select the corresponding serial port (take COM1 as an example), select COM1, and then select the configuration port. As shown in the figure below:



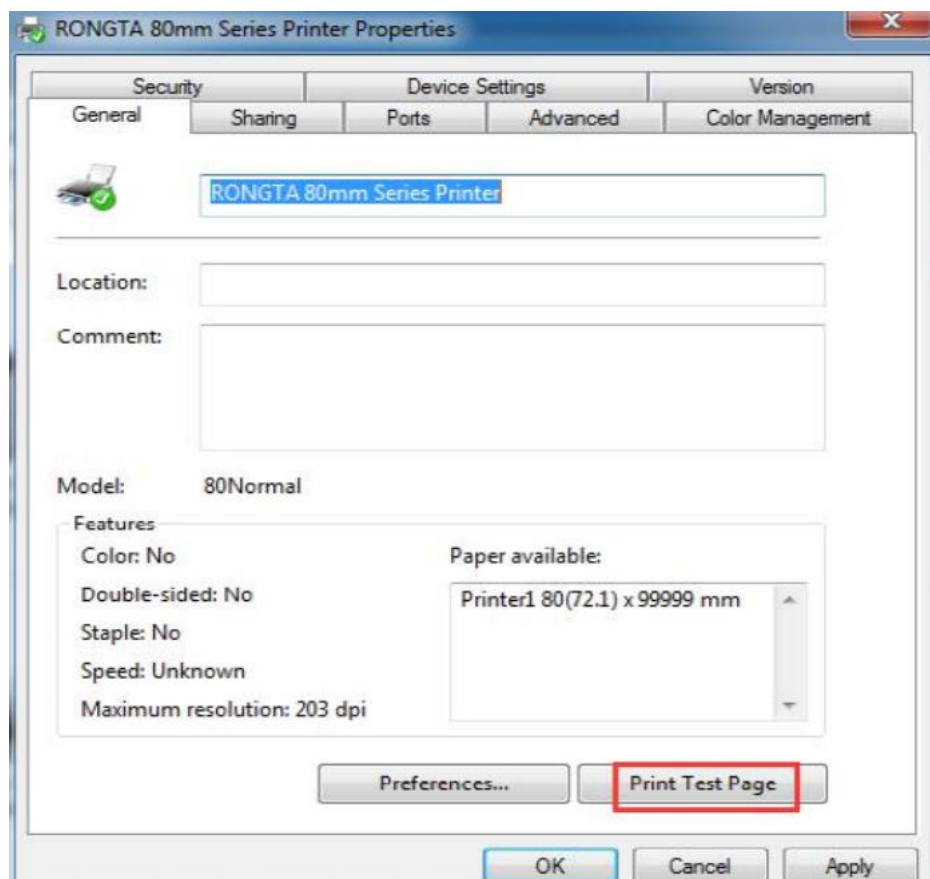
(2) The following dialog box appears: Set the value of bits per second to be the same as the printer baud rate. If the baud rate is 19200, then set the value of bits per second in the serial port properties selected for printing as 19200. After settings are completed, click "OK" to save the settings.



(3) Back to the “Printer Properties” window, select “Apply (A)”, as shown in the figure below:

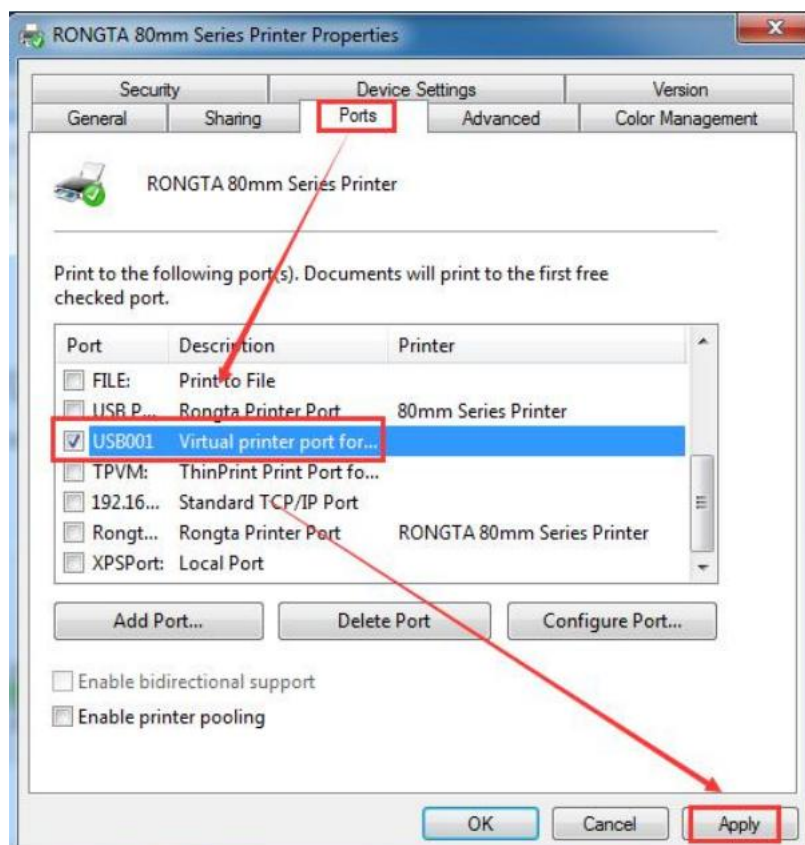


(4) After the serial port configuration is completed, select “General”, as shown in the figure below, Select “Print Test Page (T)”. If the test page can be successfully printed, it means the printer has been connected to the PC and configured correctly, and the printer port can be used normally.



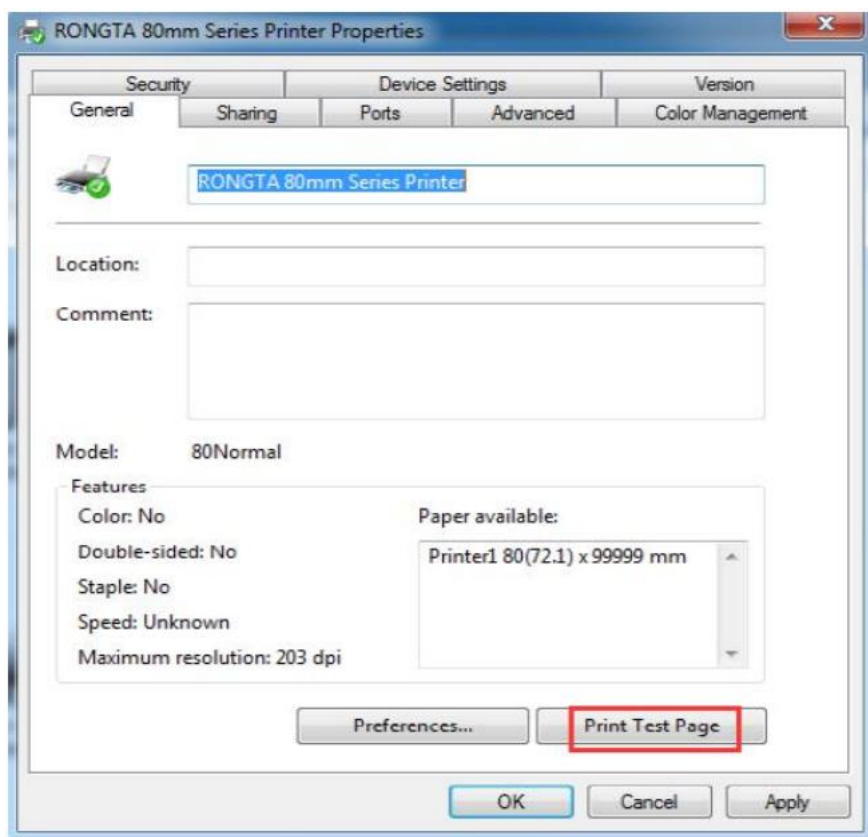
## 2.3 Print Test Page via USB Port

(1) Select "USB001 USB Virtual Printer Port", select "Apply (A)" as shown in the figure below:





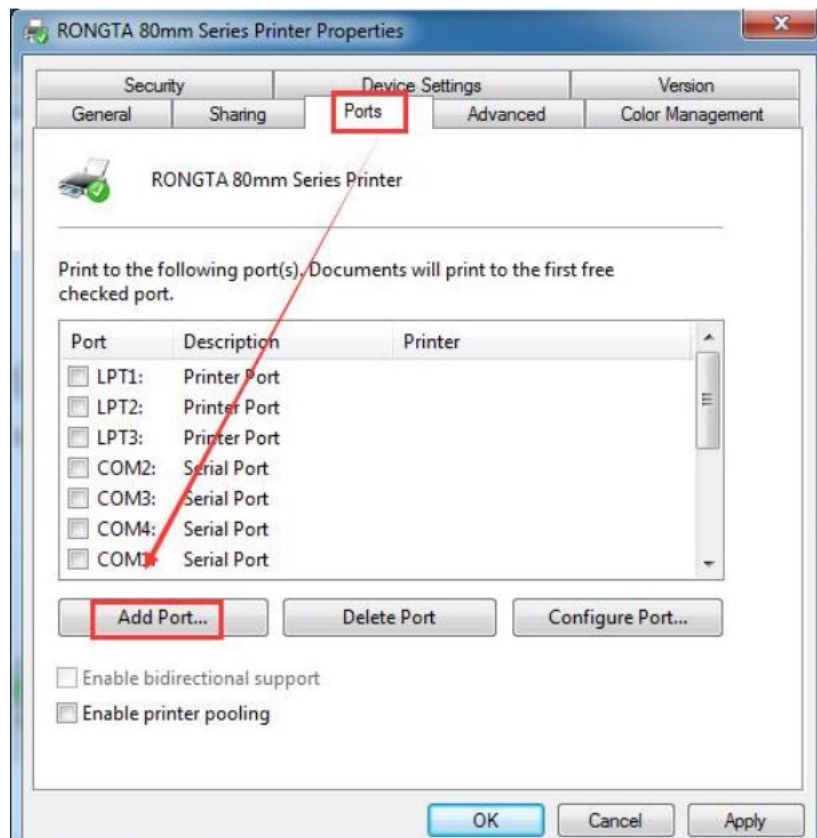
Then select “General”,select “Print Test Page (T)”. If the test page can be successfully printed, it means the printer has been connected to the PC and configured correctly, and the printer port can be used normally, as shown in the figure below:



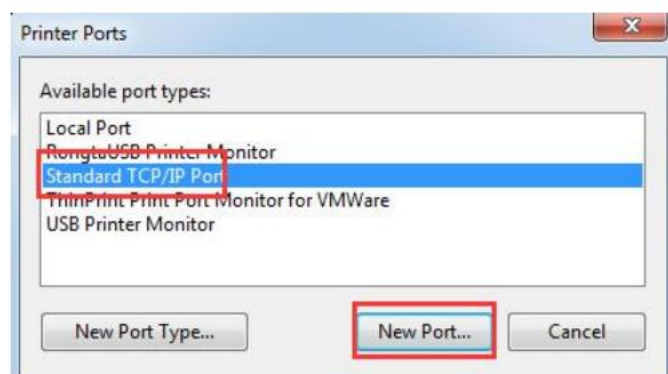
## 2.4 Print Test Page via Network Port

(1)Open the Printer Properties,select “Add Port (T)” as shown in the figure below:

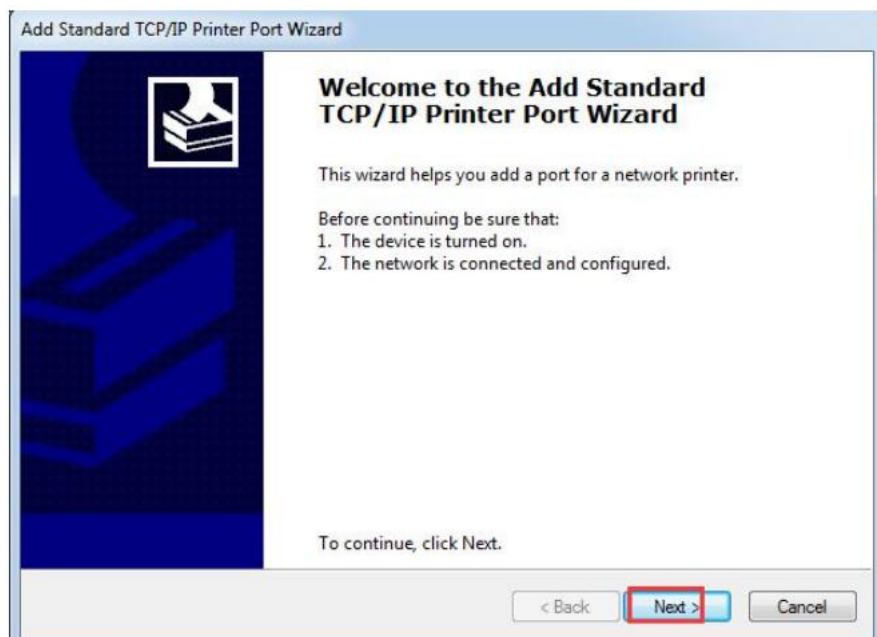




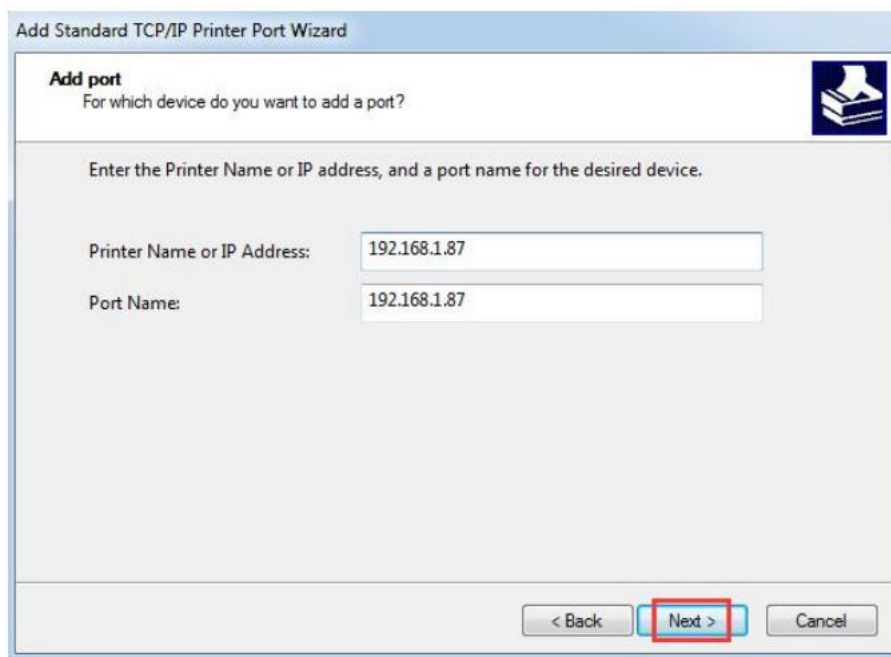
(2) Select "New Port (P) ...", as shown in the figure below:



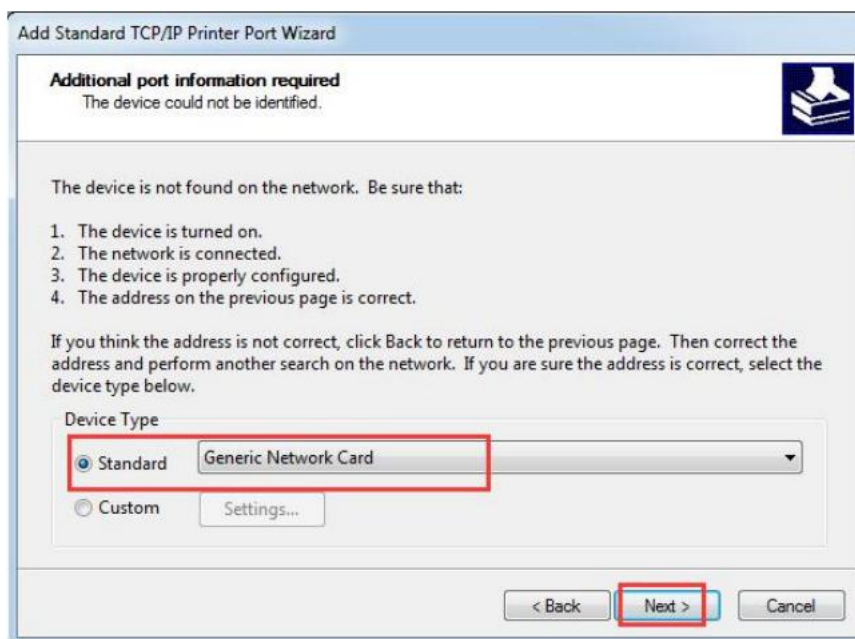
(3) Select "Next (N)", as shown in the figure below:



(4) Then enter “192.168.1.87” after the “Printer Name or IP address (A)”, and then select “Next (N)”, as shown in figure below:



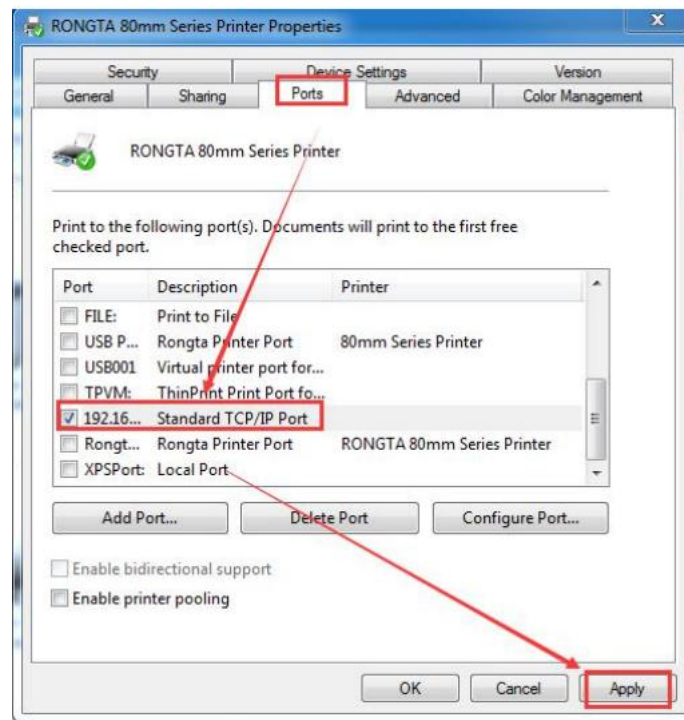
(5) Then select “Next (N)”, as shown in figure below:



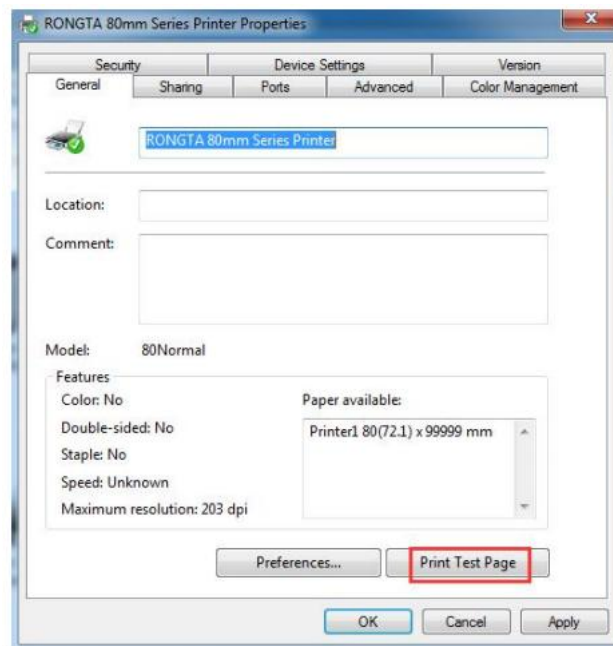
(6) Then select “Finish”, that is, a standard TCP/IP port is added.



(7) Select “ 192.16... Standard TCP/IP Port”, then select “Apply (A)” as shown in the figure below:

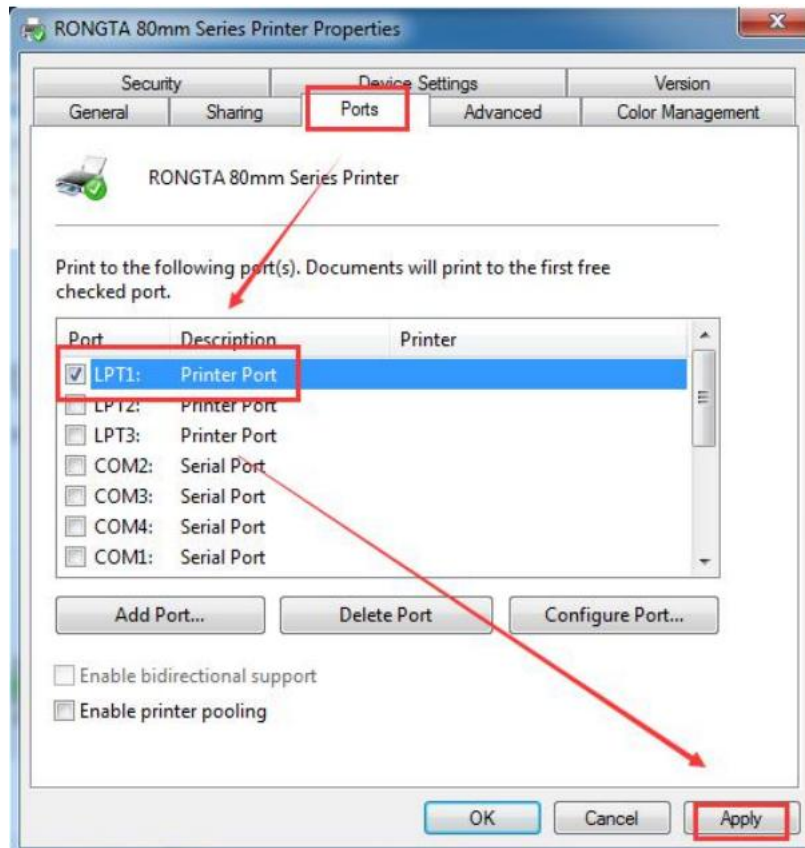


(8)select “General” as shown in the figure below. Select “Print Test Page (T)”. If the test page can be successfully printed, it means the printer has been connected to the PC and configured correctly, and the printer port can be used normally.

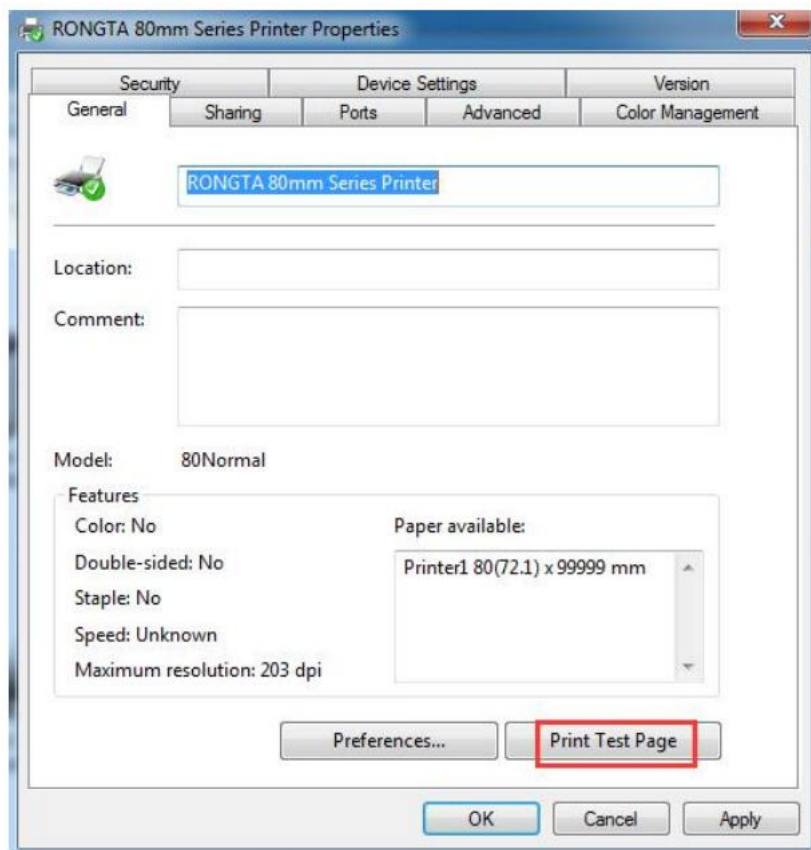


## 2.5 Print Test Page via Parallel Port

(1)Select a port among “LPT1: Printer Port, LPT2: Printer Port, LPT3: Printer Port”. The port connected with a parallel port line should be selected. Take “LPT1: Printer Port” .Select “Apply (A)” as an example below.

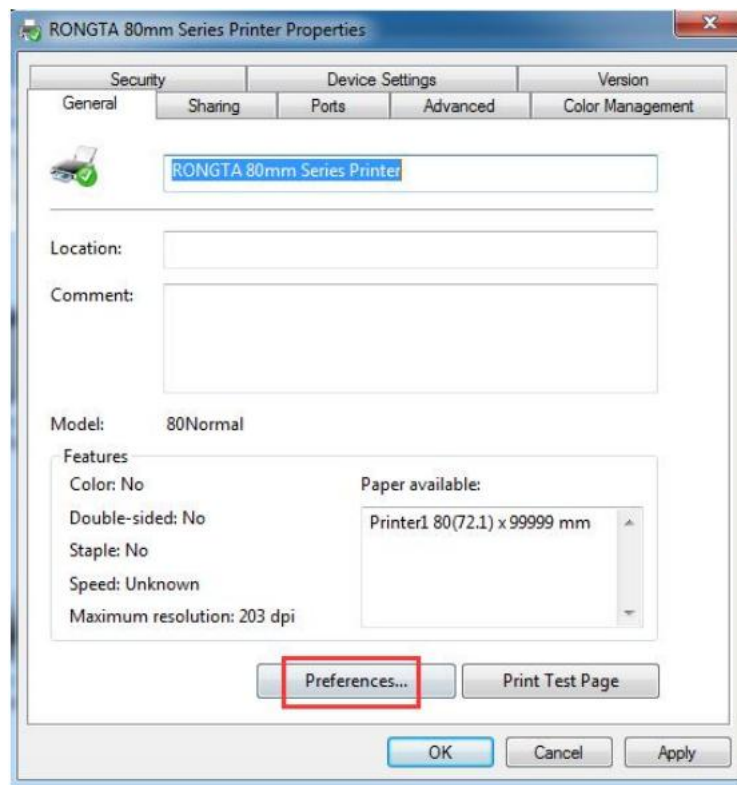


(2) Select "General", Select "Print Test Page (T)". If the test page can be successfully printed, it means the printer has been connected to the PC and configured correctly, and the printer port can be used normally. As shown in the figure below:

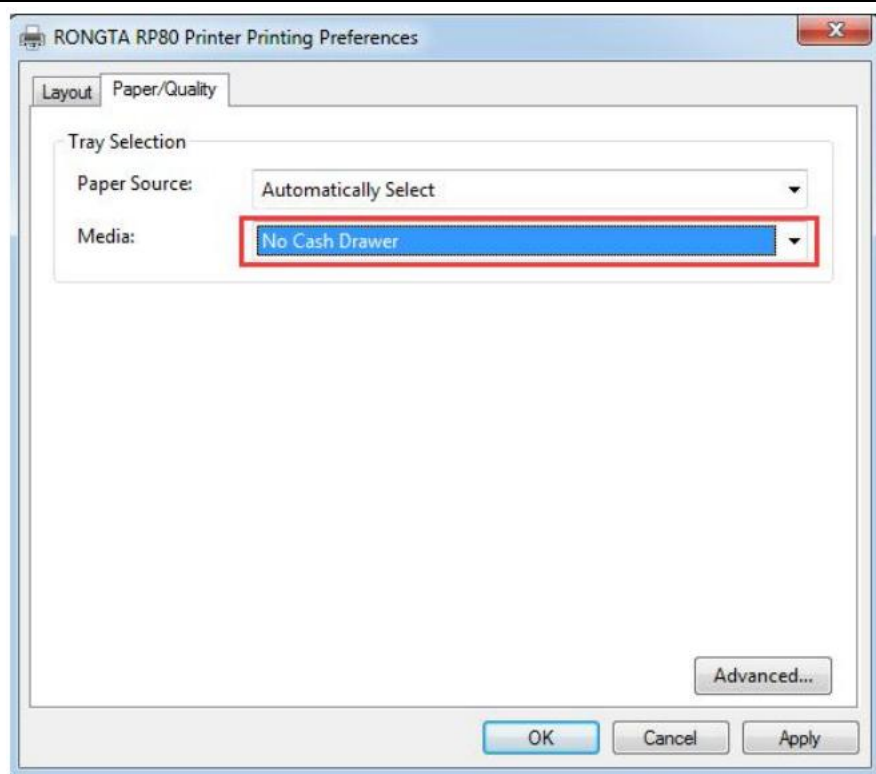


## 2.6 Diffusion knife and Cash Box Settings

(1) Select the Printer Properties, and click “Print Preference Pages”



(2) The driver has been set to automatically cut paper and open the Cashbox by default. If you need to change the settings, please follow the instructions below: Select “Paper/Quality”, choose whether to cut paper in the “Paper Source” option, for example Report (Cut) is automatic paper cutting, the diffusion knife will automatically cut the paper after the test page is printed. The “Media” option is to choose whether the Cashbox works. After the selection, click “Apply” and “OK” to complete the settings.



**\*\*\*Our company reserves the right to change the Manual in order to continuously improve our products.\*\*\***